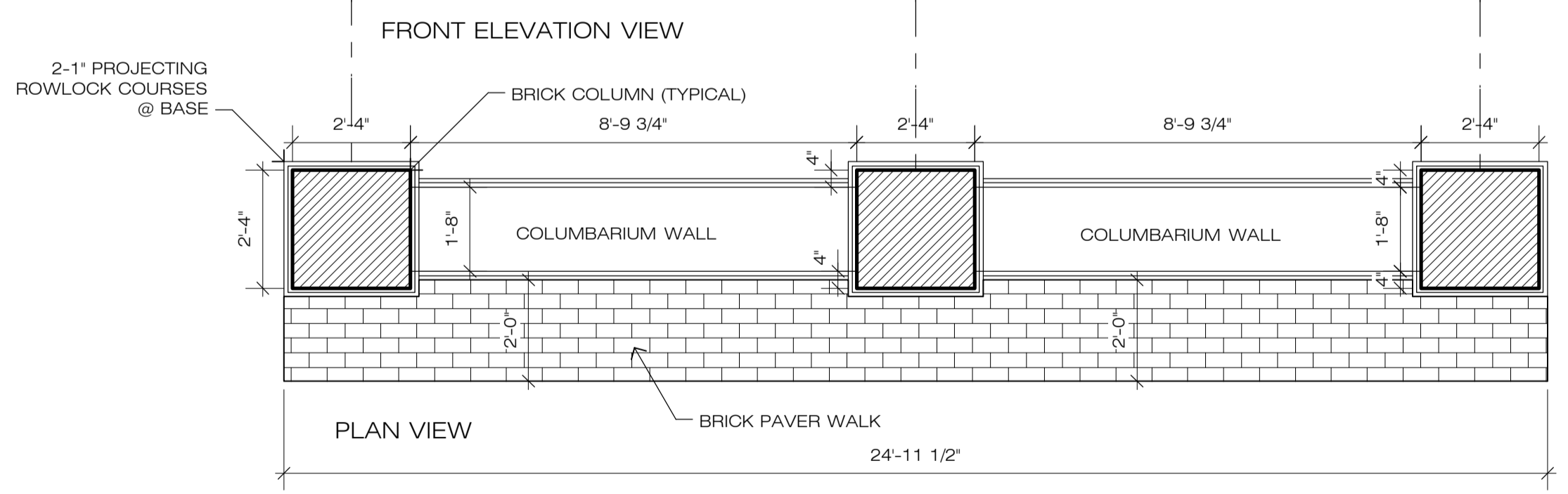
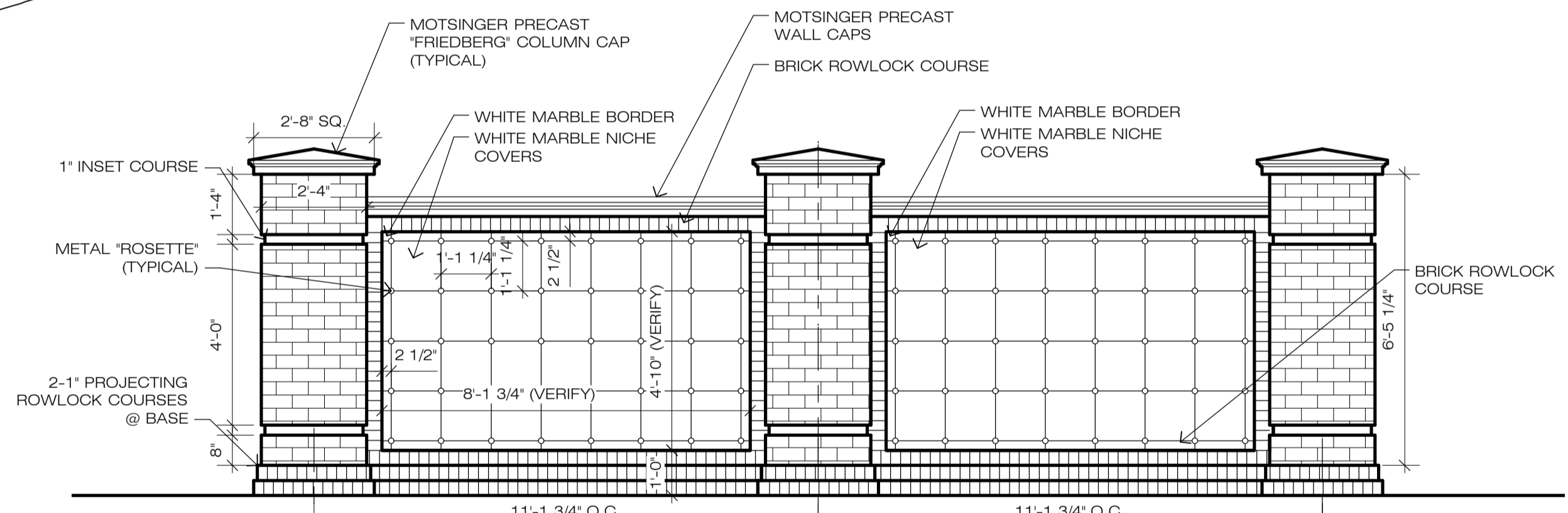


CENTER COLUMN DETAIL  
 SCALE: 3/8" = 1'-0"

NOTE: A TOPOGRAPHIC SURVEY PREPARED BY A REGISTERED LAND SURVEYOR THAT LOCATES EXISTING FEATURES AND CONDITIONS OF THE PROJECT SITE WAS NOT AVAILABLE FOR THIS PROJECT. THEREFORE, FINISH GRADES, SLOPES, NUMBER OF STEP RISERS, WALL HEIGHTS, DRAINAGE PATTERNS, ETC. MAY REQUIRE ADJUSTMENT IN THE FIELD AS DETERMINED BY THE ACTUAL SITE CONDITIONS. THESE PLANS INDICATE DESIGN CONCEPTS AND GENERAL INTENT ONLY. THE CONTRACTOR SHALL CONFIRM AND VERIFY ALL DIMENSIONS, DETAILS AND SPECIFICATIONS PRIOR TO CONSTRUCTION. VARIATIONS FROM THAT WHICH ARE INDICATED ON THE PLANS SHALL BE BROUGHT TO THE IMMEDIATE ATTENTION OF THE LANDSCAPE ARCHITECT.



COLUMBARIUM WALL DETAILS  
 SCALE: 3/8" = 1'-0"

PRELIMINARY COLUMBARIUM PLAN  
 SCALE: 1/8" = 1'-0"

